



TRELLIS SHAWL

Designed for Urth Yarns by Catherine Salter Bayar

Material: 1 skein Urth Monokrom Fingering

Dimensions: 58" x 22" at widest points

Needles: US 7/4.5mm 30"/76cm circ
US 6/4mm 30"/76cm circ

Notions: Tapestry Needle
2 Stitch Markers
Row counter (optional)
3mm crochet hook (optional)

Gauge: Unblocked 22 sts x 32 rows over 4 inches/10cms
Blocked 19 sts x 25 rows over 4 inches/10cms

Abbreviations:

BO - Bind off

CO - Cast on

EOR - End of Row

Foll - Follow(s)

K - Knit

MN - Make Nupp (stitch comprised of k1, yo, k1, yo, k1, yo, k1 into a single stitch)

PM - Place marker

Rem - Remain/Remaining

Rep - Repeat

RS – Right Side

SSK - Slip 2 stitches knit-wise one at a time onto right needle, pass back and knit two together

SM - Slip marker

Sts - Stitches

St St - Stockinette Stitch

WS - Wrong Side

YO - Yarn over





Pattern Notes:

This parallelogram shaped shawl is knit flat from one side to the other.

The nupps used in this pattern are not traditional Estonian nupps, they are executed across multiple rows, three in total to enhance the texture of the finished shawl.

The 7 stitch wide nupp as presented in row 3 and finished in row 4 may be substituted with a 3 or 5 stitch wide nupp at the discretion of the knitter. The fewer stitches, the flatter the texture of the finished object.

If the size of the nupps is changed, the stitch counts on row 1-3 will change proportionally.

Unless otherwise stated, the border along the both edges is a total of 4 stitches per side, the first is always slipped.

Shaping is accomplished by decreasing the number of stitches worked on right side rows of the *Decreasing Section* of the pattern. As a result, the border edge is worked at the beginning of all RS rows, but is omitted at the end of all RS rows in the *Decreasing Section*. The work is turned, but no need to wrap sts in the yo, k2tog.

Pattern:

Using US 7/4.5mm cast on 209 sts

Row 1 (RS): Sl1, k3, pm, *mn, k9, rep from * to last five sts, mn, pm, k4 (209 sts inc 21 nupps comprised of 4 knit sts and three YO each, or a total of 335 sts inc nupp increase)

Row 2 (WS): Using US 6/4mm Sl1, k3, sm, *purl 7, k9, rep from * to 7 st before m, p7, sm, k4

Row 3 (RS): Sl1, knit to EOR (335 sts)

Row 4 (WS): Sl1, k3, sm, *p7tog using crochet hook if necessary to pull each nupp tight, k9, rep from * to 7 st before m, p7tog, sm, k4 (209 sts)

Row 5 (RS): Sl1, k3, sm, *k2tog, yo, rep from * to 1 st before m, k1, sm, k4

Row 6 (WS): Sl1, k3, sm, purl to 2 sts before m, p2tog, sm, k4 (208 sts)



Fiddle Lace Stitch Field (10 st repeat, see chart)

Using US 6/4mm needle proceed with Row 1 of chart. as foll:

Row 1 (RS): Sl1, k3, sm, *k, ssk, k2, yo, k, yo, k2, k2tog, k, ssk, k2, yo, k, yo, k2, k2tog, rep from * to m, sm, k4

Row 2, and all WS rows up to and including row 42: Sl1, k3, sm, purl to m, sm k4

Row 3 (RS): Sl1, k3, sm, *k, ssk, k2, yo, k, yo, k2, k2tog, k, ssk, k2, yo, k, yo, k2, k2tog, rep from * to m, sm, k4

Row 5 (RS): Sl1, k3, sm, *k, ssk, k2, yo, k, yo, k2, k2tog, k, ssk, k2, yo, k, yo, k2, k2tog, rep from * to m, sm, k4



Row 7 (RS): Sl1, k3, sm, *k, yo, ssk, k5, k2tog, yo, k, yo, ssk, k5, k2tog, yo, rep from * to m, sm, k4

Row 9 (RS): Sl1, k3, sm, * k2, yo, ssk, k3, k2tog, yo, k3, yo, ssk, k3, k2tog, yo, k, rep from * to m, sm, k4

Row 11 (RS): Sl1, k3, sm, *k3, yo, ssk, k, k2tog, yo, k5, yo, ssk, k, k2tog, yo, k2, rep from * to m, sm, k4

Row 13 (RS): Sl1, k3, sm, *k4, yo, k3tog, yo, k7, yo, k3tog, yo, k3, rep from * to m, sm, k4

Row 15 (RS): Sl1, k3, sm, *k, ssk, k2, yo, k, yo, k2, k2tog, k, ssk, k2, yo, k, yo, k2, k2tog, rep from * to m, sm, k4

Row 17 (RS): Sl1, k3, sm, *k, ssk, k2, yo, k, yo, k2, k2tog, k, ssk, k2, yo, k, yo, k2, k2tog, rep from * to m, sm, k4

Row 19 (RS): Sl1, k3, sm, *k, ssk, k2, yo, k, yo, k2, k2tog, k, ssk, k2, yo, k, yo, k2, k2tog, rep from * to m, sm, k4

Row 21 (RS): Sl1, k3, sm, *k, yo, ssk, k5, k2tog, yo, k, yo, ssk, k5, k2tog, yo, rep from * to m, sm, k4

Row 23 (RS): Sl1, k3, sm, *k2, yo, ssk, k3, k2tog, yo, k3, yo, ssk, k3, k2tog, yo, k, rep from * to m, sm, k4

Row 25 (RS): Sl1, k3, sm, *k3, yo, ssk, k, k2tog, yo, k5, yo, ssk, k, k2tog, yo, k2, rep from * to m, sm, k4

Row 27 (RS): Sl1, k3, sm, * k4, yo, k3tog, yo, k7, yo, k3tog, yo, k3, rep from * to m, sm, k4

Row 29 (RS): Sl1, k3, sm, *k, ssk, k2, yo, k, yo, k2, k2tog, k, ssk, k2, yo, k, yo, k2, k2tog, rep from * to m, sm, k4

Row 31 (RS): Sl1, k3, sm, *k, ssk, k2, yo, k, yo, k2, k2tog, k, ssk, k2, yo, k, yo, k2, k2tog, rep from * to m, sm, k4

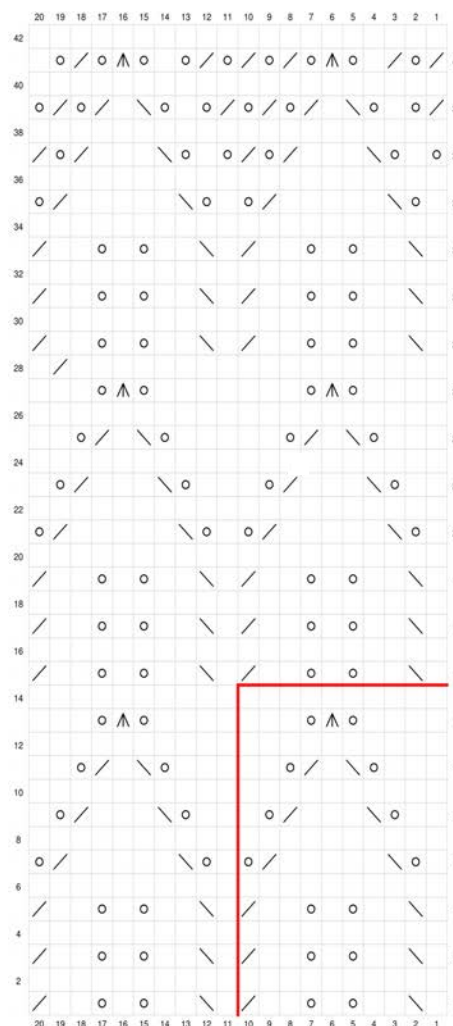
Row 33 (RS): Sl1, k3, sm, *k, ssk, k2, yo, k, yo, k2, k2tog, k, ssk, k2, yo, k, yo, k2, k2tog, rep from * to m, sm, k4

Row 35 (RS): Sl1, k3, sm, *k, yo, ssk, k5, k2tog, yo, k, yo, ssk, k5, k2tog, yo, rep from * to m, sm, k4

Row 37 (RS): Sl1, k3, sm, * yo, k, yo, ssk, k3, k2tog, yo, k2tog, yo, k, yo, ssk, k3, k2tog, yo, k2tog, rep from * to m, sm, k4

Row 39 (RS): Sl1, k3, sm, *k2tog, yo, k, yo, ssk, k, k2tog, yo, k2tog, yo, k2tog, yo, k, yo, ssk, k, k2tog, yo, k2tog, yo, rep from * to m, sm, k4

Row 41 (RS): Sl1, k3, sm, * k2tog, yo, k2tog, k, yo, k3tog, yo, k2tog, yo, k2tog, yo, k2tog, yo, k, yo, k3tog, yo, k2tog, yo, k2tog, rep from * to m, sm, k4



- RS: Knit
WS: Purl
- RS: Purl
WS: Knit
- ↘ Slip knitwise, slip knitwise, knit stitches together
- ↗ Knit 2 together
- ↖ Knit 3 together
- ↙ Knit 3 together through back loop
- △ Knit 3 together
- Yarn over
- No stitch



Decreasing Section

See Pattern Notes

Row 43 (RS): Sl1, k3, sm, *yo, k2tog, rep from * to 8 sts from EOR. (8 sts not worked and therefore not counted in total stitch count.)

Row 44 and all subsequent even rows (WS): Sl1, k3, sm, purl to last 4 sts, k4.

Row 45 (RS): Sl1, k3, sm, *yo, k2tog, rep from * to 12 sts from EOR. (total of 12 sts not worked)
Continue in this fashion working 4 fewer stitches on each RS row until 8 sts remain ending on a WS row.

Rolled edge

Transition to larger needle and proceed as foll:

Row 1 (RS): Knit across all stitches including those not worked in the Decreasing section (208 sts)

Row 2 (WS): Purl

Rows 3-6: Rep rows 1-6

Bind off all sts.

Finishing

Steam block and dry using blocking pins or rods to maintain shape as the shawl air dries.

