

Sorbet Sprinkles

Designed by Amy Gunderson

Sizes

One

Finished Measurements

Length: 72"

Depth in Center: 18"

Materials

Knitcircus Greatest of Ease (80% superwash merino wool, 20% nylon; 100g/400 yds)

- Kid in a Candy Store Impressionist (MC) – 1 skein

Needles: US Size 5 (3.75 mm) 24" circular or size needed to obtain gauge

US Size 6 (4 mm) 2 x 40" circular (for I-Cord Edging)

Notions: Stitch markers, tapestry needle, 13 g of spare sock yarn for I-Cord edging

Gauge

16 sts x 22 rows = 4" in stockinette stitch, after aggressive blocking

Pattern Notes

Speckles plus gradient all in the same cake? Yes, please! Sorbet Sprinkles lets the yarn do the talking in this sideways knit scarf.

One cake of Greatest of Ease + 13g of sock yarn from your stash = one wearable scarf.

Work begins at one tip, increases to the center, and then decreases down to the opposite tip. Stitches are picked up all the way around the scarf with the spare sock yarn, and an I-Cord bind-off is worked giving a clean and polished looking edge.

If you have lots of sock yarn scraps (like, who doesn't??), it could be fun to use multiple colors around the edge. I could see one color for each of the three edges of the triangle, change colors every few inches – the sky's the limit!



Stitch Guide

I-Cord Bind-off: Cast on 3 sts using the knitted method. * K2, k2tog tbl (1 st bound off), slip these 3 sts back to left ndl; rep from *.

Pattern:

Scarf

Beginning Tip

With MC and smaller needle, CO 3 sts. Knit a WS row.

Row 1 (RS): K2, m1, pm, k1 – 1 st inc'd, 4 sts.

WS Rows 2–12: Knit.

Row 3: K3, sl m, m1, k1 – 1 st inc'd, 5 sts.

Row 5: K3, sl m, k1, m1, k1 – 1 st inc'd, 6 sts.

Row 7: K3, sl m, k2, m1, k1 – 1 st inc'd, 7 sts.

Row 9: K3, sl m, k3, m1, k1 – 1 st inc'd, 8 sts.

Row 11: K3, sl m, k4, m1, k1 – 1 st inc'd, 9 sts.

First Half

Row 1 (RS): K3, sl m, work Row 1 of First Half chart, pm, k6 – 1 st inc'd, 10 sts.

Row 2 and all WS rows: Knit to m, purl to m, knit to end.

We super duper hope you enjoy this project! This pattern and the associated photographs are for personal, non-commercial use and are not for resale. Please respect the people who worked to create this awesome pattern and do not make copies. Thanks a bunch!

Got questions? Reach us at YarnBFF@jimmybeanswool.com

Row 3: K3, sl m, work Row 3 of First Half chart to m, k6.

Cont as est'd, keeping sts outside markers in garter st, and sts inside markers in charted patt. Work through Row 72 of First Half chart, then rep Rows 41-72 of chart, 5 more times, then work Rows 73-80 of chart, 1 time – 69 total sts, 60 sts bet markers.

Second Half

Row 1 (RS): K3, sl m, work Row 1 of Second Half chart to m, k6.

Row 2 and all WS rows: Knit to m, purl to m, knit to end.

Row 3: K3, sl m, work Row 3 of Second Half chart to m, k6 – 1 st dec'd, 68 sts rem.

Cont as est'd, keeping sts outside markers in garter st, and sts inside markers in charted patt. Work through Row 36 of chart, then rep Rows 5-36, 5 more times, then work Rows 37-76 of chart, 1 time – 10 sts rem. Remove markers.

Ending Tip

Row 1 (RS): K2, k2tog, knit to end – 9 sts rem.

WS Rows 2-12: Knit.

RS Rows 3-11: K2, k2tog, knit to end – 4 sts rem.

Row 13: K1, k2tog, k1 – 3 sts rem.

BO all sts kwise over the next WS row.

Finishing

With spare sock yarn and larger circular needle, pick up and knit 3 sts along CO edge, 1 st for each garter ridge along straight edge of scarf; with second circular needle, pick up and knit 1 st along Second Half edge up to tip, 1 st along First Half down to CO edge, turn.

With WS facing, taking care not to work too tightly, BO all sts using the I-Cord method to m, working extra rows of I-Cord without joining (to allow for ease) at pointed tip of shawl and on each end.

Weave in ends. Run blocking wires along all

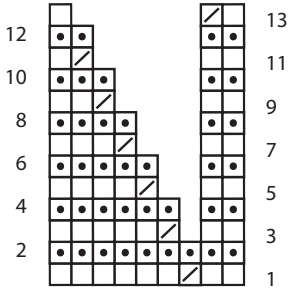
sides of shawl. Wet or steam block, stretching and pinning blocking wires to blocking board to open up lace.

Abbreviations

bet	between
BO	bind off
CO	Cast on
cont	continue
dec('d)	decreased
est'd	established
k	knit
k2tog	knit 2 stitches together (1 st dec'd)
inc('d)	increase(d)
m	marker
m1	insert left needle from front to back under horizontal strand of yarn lying between st just worked and next st, knit or purl this st through the back loop (1 st inc'd)
patt	pattern
p	purl
pm	place marker
rem	remain(ing)
rep	repeat
rnd	round
RS	right side
sl	slip
sl m	slip marker
st(s)	stitch(es)
tbl	through the back loops
WS	wrong side
yo	yarnover



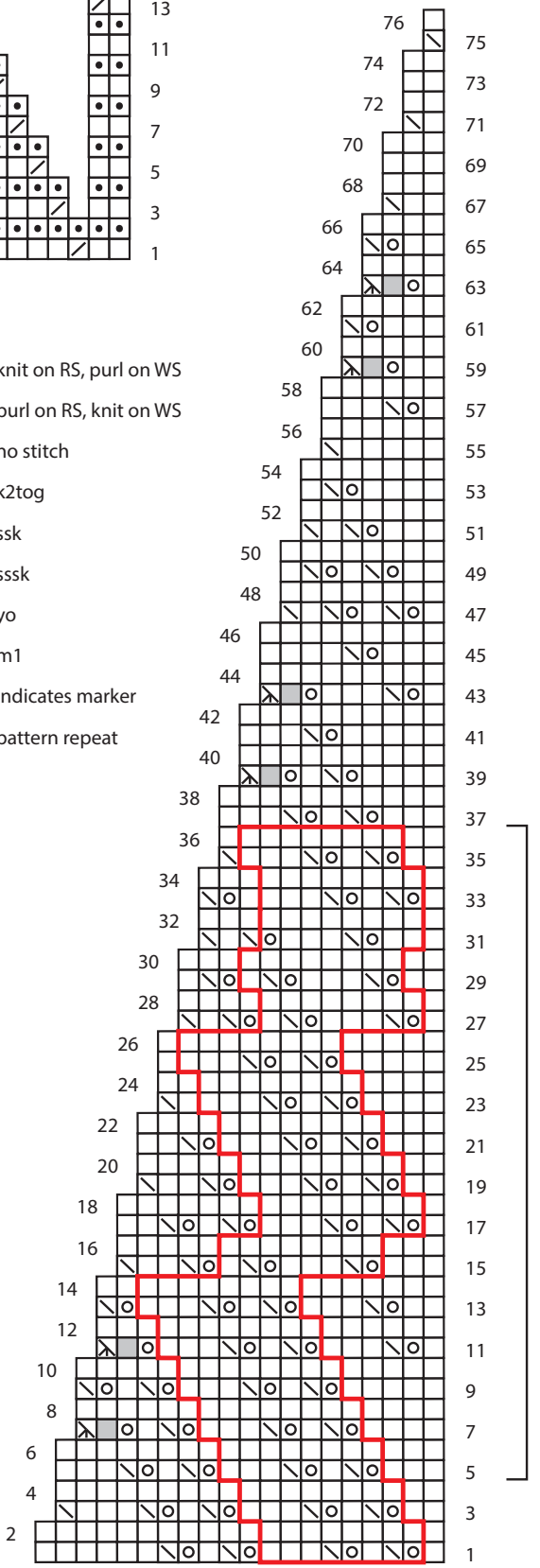
Ending Tip



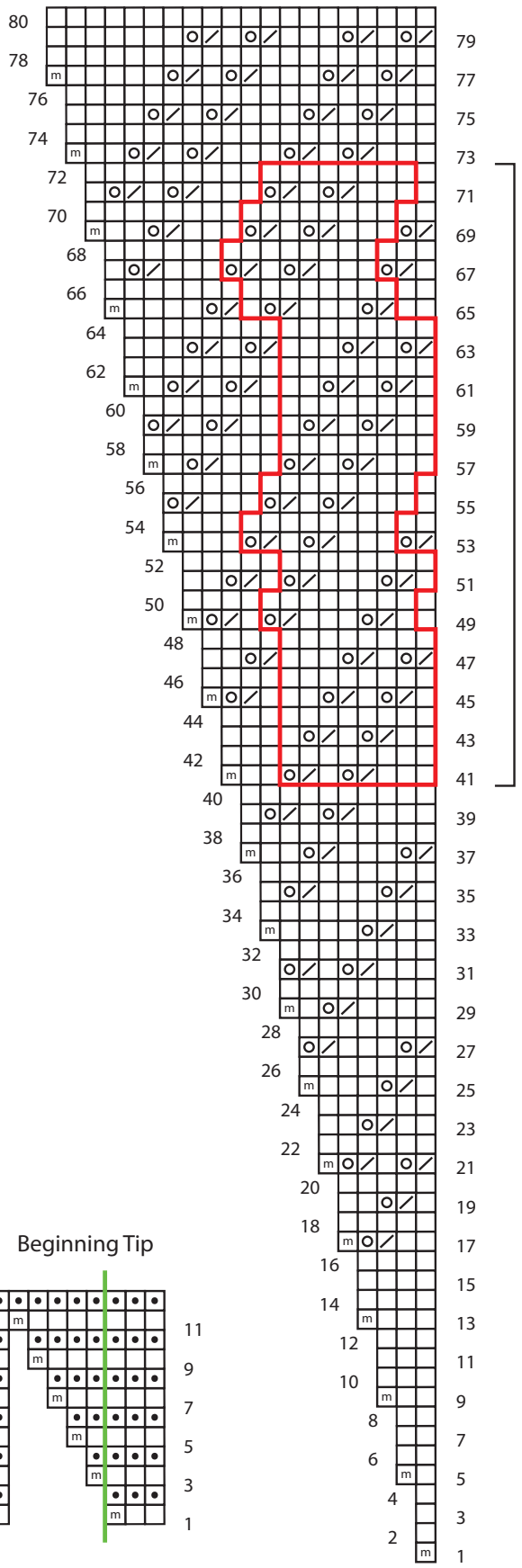
Key

- knit on RS, purl on WS
- purl on RS, knit on WS
- no stitch
- k2tog
- ssk
- sssk
- yo
- m1
- indicates marker
- pattern repeat

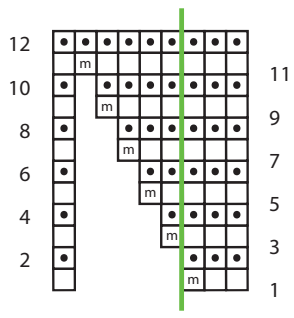
Second Half



First Half



Beginning Tip



We super duper hope you enjoy this project! This pattern and the associated photographs are for personal, non-commercial use and are not for resale. Please respect the people who worked to create this awesome pattern and do not make copies. Thanks a bunch!
 Got questions? Reach us at YarnBFF@jimmybeanswool.com

