

## Garden Bed Shawl

In celebration of Mother's Day 2017, I collaborated with Jimmy Beans Wool to design a shawl using two of their Lorna's Laces Limited Edition colors for the month of May, with the theme being "April Showers bring May Flowers." GARDEN BED uses two skeins of sock yarn in an uncommon construction. One color is knit in a repeating lace motif with picots, and the second color is picked up along the edge of the panel, decreasing in easy garter stitch to create a triangle shape. The finished result is an elegant shawl with intricate stitch definition and an exquisite color palette, serving as the perfect accessory for a wonderful mother.

- Christopher Salas

Materials	Gauge & Measurements
<p>Two Skeins of Lorna's Laces Shepherd Sock Yarn (80% Superwash Wool, 20% Nylon. 430 yards.)</p> <p>SAMPLE ONE</p> <ul style="list-style-type: none"> <li>• Color A: Jimmy Beans Wool Exclusive – May 2017: May Flowers. 400 yards used.</li> <li>• Color B: Jimmy Beans Wool Exclusive – May 2017: Jimmy's April Showers. 200 yards used.</li> </ul> <p>US 4 40" circular needle Tapestry Needle</p>	<p>77" in wingspan. 29" from top of shawl to deepest point.</p> <p>About 12 sts and 20 rows every 2" in garter stitch.</p>

PATTERN NOTE: Read the entire pattern before casting on to familiarize yourself with the project before beginning. While gauge is not critical for the size of the shawl, it is critical for yardage, as I only had 30 yards of Color A left. ON THE PICOT EDGING: When binding off the three stitches, you are left with one stitch on the right needle. This counts as one of the two stitches on the border of the project, so on this row, it'll be written as a k1. Just keep in mind that there are two garter stitches that make up the border on each side.

<p><b>ABBREVIATIONS</b></p> <p><b>K:</b> Knit <b>P:</b> Purl St/sts: <b>Stitch/es</b> <b>Kfb:</b> Knit the front, then back of the same stitch. One stitch increased <b>Kfbf:</b> Knit the front, back, then the front of the same stitch. Two stitches increased. <b>K2tog:</b> Knit two stitches together. One Stitch Decreased</p>	<p><b>Ssk:</b> Slip-slip-knit. One stitch decreased. <b>Yo:</b> Yarn over. <b>K3tog:</b> Knit three stitches together. Two sts decreased. <b>SK2P:</b> Slip one stitch knitwise, knit two sts together, pass the slipped stitch over the last stitch. Two sts decreased. <b>Sl1 wyif:</b> Slip one stitch purlwise with yarn in front.</p>
---	--

## PATTERN INSTRUCTIONS:

### LACE SECTION

*(WRITTEN PATTERN. Charts can be found on the last page.)*

*9 sts increased every 16 rows; one stitch increased every two rows throughout the project using a “kfb” stitch. Rows where additional increases occur using a “kfbf” stitch will be written in bold. The same row (and its return row) also contain instructions to create the picot edging.*

### SETUP SECTION:

With Color A, cast on 4 sts.

Setup Row: K all sts

Row 1: K1, kfb, k2. Cast on 3 stitches (8 sts)

Row 2: Bind off 3 sts, K1, p to last 2 sts, k2 (5 sts)

Row 3 and 5: k1, kfb, k all sts

Rows 4 and 6: K2, p to last 2 sts, k2

(7 sts)

Rows 7 – 14:

- On the RS row: K1, kfb, k1, k2tog, yo, k to end
- On the WS row: K2, p to last 2 sts, k2  
(11 sts)

**Row 15:** k1, kfbf, (k1, k2tog, yo, k1) twice, k1. Cast on three sts. (16 sts)

Row 16: Bind off three sts, K1, p to last 2 sts, k2 (13 sts)

### LACE REPEAT OPENING SECTION:

*As you work each portion of the row marked with parentheses, repeat that portion until the final two sts of the row.*

Row 17: K1, kfb, (k3, yo, ssk, k1, k2tog, yo, k1), k2

Row 18 (and all even rows between here and row 30): k2, p to last 2 sts, k2

Row 19: K1, kfb, k1, (yo, ssk, k2, yo, k3tog, yo, k2), k2

Row 21: K1, kfb, k2, (k1, yo, ssk, k1, k2tog, yo, k3), k2

Row 23: K1, kfb, k1, k2tog, yo, (k2, yo, SK2P, yo, k2, k2tog, yo), k2

Row 25: K1, kfb, k1, k2tog, yo, k, (k3, yo, ssk, k1, k2tog, yo, k1), k2

Row 27: K1, kfb, k1, k2tog, yo, k2, (yo, ssk, k2, yo, k3tog, yo, k2), k2

Row 29: K1, kfb, k1, k2tog, yo, k3, (k1, yo, ssk, k1, k2tog, yo, k3), k2

Row 29: K1, kfb, k1, k2tog, yo, k3, (k1, yo, ssk, k1, k2tog, yo, k3), k2

**Row 31:** K1, kfbf, k1, k2tog, yo, k2, k2tog, yo, (k2, yo, SK2P, yo, k2, k2tog, yo), k2, co x 3

Row 32: Bind off three sts, k1, p to last 2, k2

Repeat the Lace Repeat Section six more times for a total of seven times worked (76 sts)



## LACE PANEL SECTION:

*This section continues with the same number of sts throughout and creates a slip stitch selvedge edge to be picked up later. Like the last section you work each portion of the row marked with parentheses, repeat that portion until the final two sts of the row.*

Row 1 (RS): K2, (k3, yo, ssk, k1, k2tog, yo, k1), k2

Row 2 (and all WS rows between here and Row 14): K2, p to last 2, k1, sl1 wyif

Row 3: K2, (yo, ssk, k2, yo, k3tog, yo, k2), k2

Row 5: K2, (k1, yo, ssk, k1, k2tog, yo, k3), k2

Row 7: K2, (k2, yo, SK2P, yo, k2, k2tog, yo), k2

Row 9: K2, (k3, yo, ssk, k1, k2tog, yo, k), k2

Row 11: Repeat Row 3

Row 13: Repeat Row 5

Row 15: K2, (k2, yo, SK2P, yo, k2, k2tog, yo), k2, cast on 3 sts

Row 16: Bind off 3 sts, k1, p to last 2, k2

Repeat this section 15 times for a total of 16 times worked.

Bind off all stitches as follows: \*BO 4, slip stitch on right needle back to left, cable cast on 3 sts, BO 8. Repeat from \* 8 times. Bind off the remaining sts normally. Break Color A.

## GARTER PANEL:

This section starts at the slip stitch selvedge edge where the LACE REPEAT PANEL SECTION began.

Setup Row 1. Using B, pick up and knit 128 sts along the Selvedge edge (NOTE: This is what I picked up on my project. However, if you are off by a few more (or less sts), that is okay as the stitch count does not need to be exact in this section).

Setup Row 2: K all sts.

*One stitch decreased every two rows.*

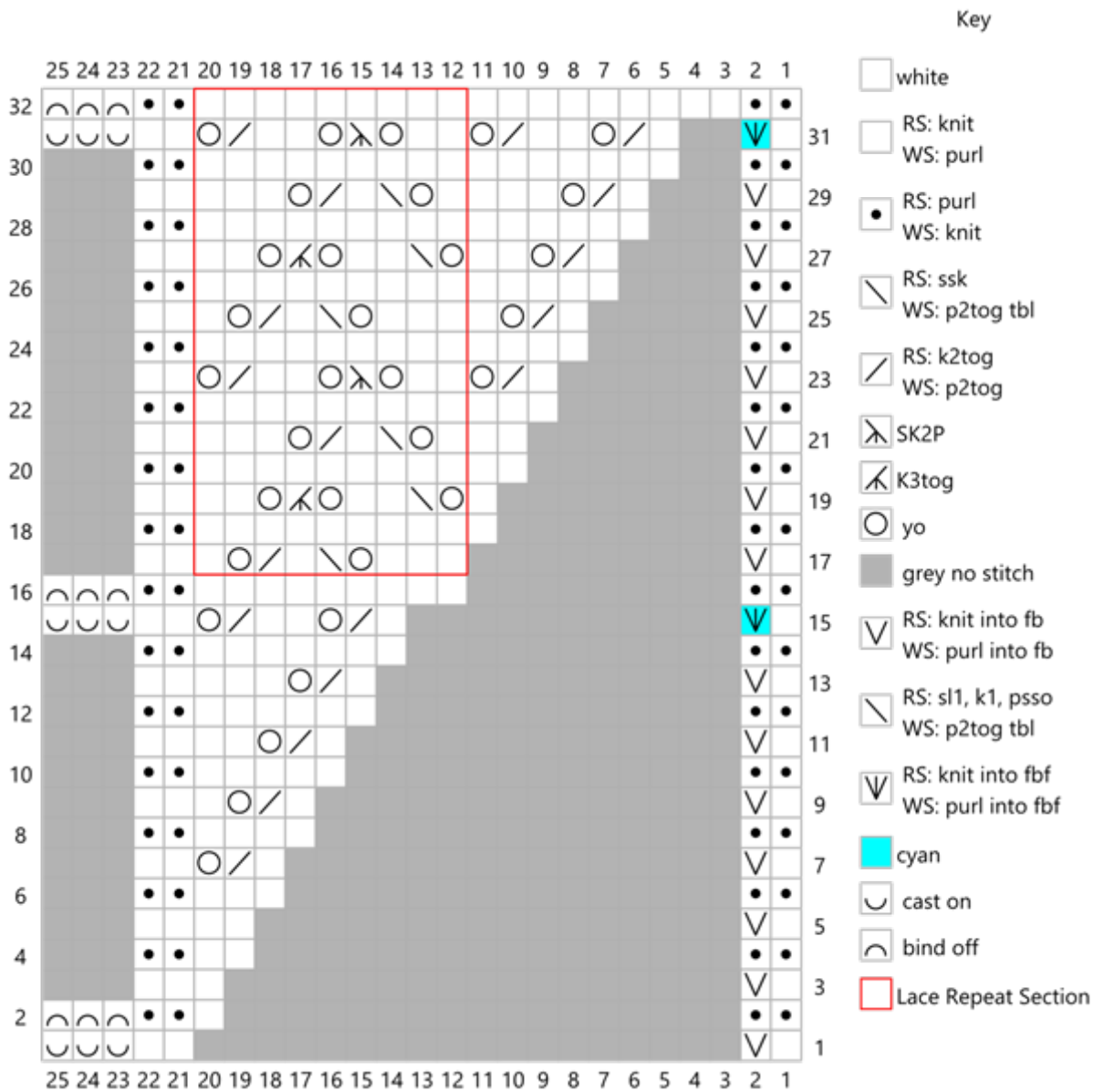
Row 1: With B, k1, ssk, k all to end

Row 2: K all

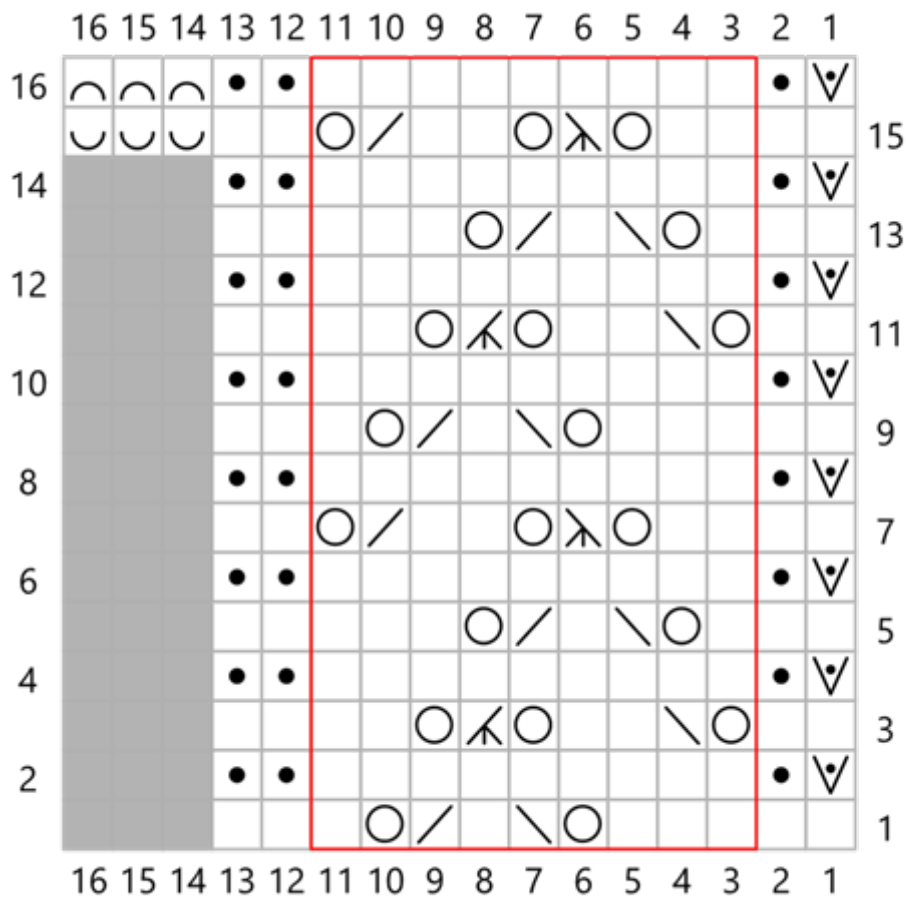
Next, repeat the two rows of the Garter Panel Section with Color A twice. Then, again with Color B twice. Continue this pattern repeat of alternating colors every four rows until you have a total of six Color A striped worked (If you feel you are running low on Color A, you may omit stripes with this color and continue with Color B). Break A. Continue working the Garter Stitch Panel with Color B until you only have 4 sts remaining. Bind off these remaining stitches. Sew in all loose ends. Block as needed.


## LACE REPEAT OPENING SECTION:

NOTE: The KFBF is marked in blue for a visual aid.



## LACE PANEL SECTION:



 RS: slip purlwise with yarn in front  
 WS: slip

Bind off all stitches as follows: \*BO 4, slip stitch on right needle back to left, cable cast on 3 sts, BO 8. Repeat from \* 8 times. Bind off the remaining sts normally. Break Color A. Continue to GARTER PANEL section above.