

Lacy Stripes Cowl

Designed by Jeanne Giles

Materials:

50 yards each of 4 colors worsted weight yarn

**Sample is knit using the June 2016 Jimmy Beans [Big Beanie Bag](#):

Berroco Maya, Juniper Moon Farm Moonshine, Plymouth Mushishi, and HiKoo Kenzie.

US 8 16" circular needle

Stitch marker(s)

Tapestry needle for weaving in your ends

NOTE: Please read the entire pattern before casting on, you will want to be clear on the color changes, as well as cast on and cast off.

Abbreviations:

K = Knit

K3tog = Knit 3 stitches together

YO = Bring yarn to front

* * = repeat instructions

CO = Cast on

Gauge:

4.25 stitches per inch, in pattern stitch, in the round, or feel free to cast on and knit your pattern, but always be prepared to rip if you choose to do so.



Designer's tip:

Cut a small snip of your color choices for A-D and tape them next to the letter as reference:

Colors

A _____

B _____

C _____

D _____

Please read pattern notes:

If you use the chart note that the colors in column 1 are NOT stitches, they are there to remind you to change colors every 3 rows. The stitch pattern is a 5 stitch combination and the cowl can be lengthened, keep in mind yardage requirements, I used just about every bit of the 50 yards of all 4 colors.

I used the Fisherman's Knot to join the color changes, who wants to weave in all those ends? I recommend checking out this great article and video on the Knitter's Review and thank you Clara Parkes!

http://www.knittersreview.com/article_how_to.asp?article=/review/profile/140717_a.asp

Cast off is worked after 5 full color repeats, now using color A work the first 3 rows as noted for color A, cast off loosely, **IMPORTANT knit all YO's to the back of the loop, as you cast off.

Making the twisted cord for ruching the cowl. Here's a great tutorial on making a twisted cord from Berroco and once you have finished your cowl, you will choose 2 lace sections, weave your cord from top to bottom and back up again, pull it together to your taste and wear with pride.

<https://www.youtube.com/watch?v=fftJO-p6xm0>

I used the German Twisted Cast On and shot a video about this many moons ago for Jimmy Beans Wool. I love this cast on (as I am a long tail caster one), as it creates a nice stretchy edge. If you prefer a different method no problem, but please be sure it's loose and stretchy.

<https://www.jimmybeanswool.com/secure-html/onlineec/instructionalArticle.asp?iaid=105>

Block piece aggressively to open up the lace.

Let's knit!

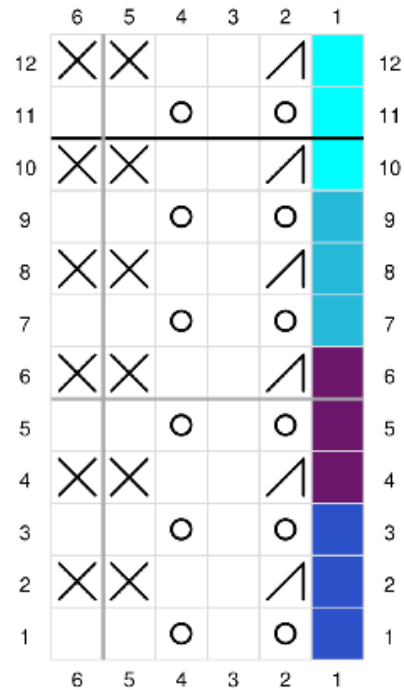
CO 95 sts using the German Twisted Cast On (see pattern notes) in color A join to work in the round, be careful not to twist your stitches, place marker, follow either the written directions, or the chart, knitter's choice.

COLOR A

Row 1: *YO, K1, YO, K2*

Row 2: *K3tog, K2*

Row 3: *YO, K1, YO, K2*



CHANGE TO COLOR B

Row 4: *K3tog, K2*

Row 5: *YO, K1, YO, K2*

Row 6: *K3tog, K2*

CHANGE TO COLOR C

Row 7: *YO, K1, YO, K2*

Row 8: *K3tog, K2*

Row 9: *YO, K1, YO, K2*

CHANGE TO COLOR D

Row 10: *K3tog, K2*

Row 11: *YO, K1, YO, K2*

Row 12: *K3tog, K2*



Designed with Stitch Fiddle
www.StitchFiddle.com

Battle Born Knits is dedicated to designing with you, the hand knitter in mind! We do our best to edit, test knit, edit and edit some more, but sometimes things do slip through. We hope you won't hesitate to contact us with any questions, anytime, as we will get back to you as quickly as possible! Happy knitting!

battlebornknits@gmail.com
<https://battlebornknitsblog.wordpress.com/>