



## PATTERN COLLECTION

### Accessories



#### Turkish Delight

Designed by Rachel Brockman

#### DIFFICULTY

Intermediate

#### SIZES

One Size

#### FINISHED MEASUREMENTS

Length: 64"

Width (at widest edge): 36"

#### MATERIALS

[Universal Yarn Colorburst](#) (65% superwash fine merino, 35% acrylic; 200g/660 yds)

- 119 Bursa (A) - 1 ball
- 112 Romance (B) - 1 ball

**Needles:** US Size 8 (5 mm) 24" circular or longer (to accommodate large number of sts) *or size needed to obtain gauge*

**Notions:** Tapestry needle, stitch markers

#### GAUGE

18 sts x 36 rows = 4" in garter st

**Save time, check your gauge.**

Knit, Relax, Smile, Repeat!

2021 © Universal Yarn, Inc.

[www.universalyarn.com](http://www.universalyarn.com)

All rights reserved. This pattern may not be reproduced for business, trade or sale.

Questions? Contact [patterns@universalyarn.com](mailto:patterns@universalyarn.com)

## PATTERN NOTES

A colorful shawl is a perfect accessory to brighten up cold winter days. Our Colorburst yarn self-shades into beautiful tones as you work, making the 'color work' as simple as can be! Turkish Delight uses two colors of our Colorburst yarn worked in a mosaic motif inspired by the tasty confection. The result is a show-stopping accessory you'll want to wear all season.

This shawl is knit flat beginning at the tip and increasing to the widest edge. It is knit on the bias, and one stitch is increased every right side row. This shawl incorporates both garter stitch stripes and mosaic knitting. Only one color is used per row. Do not break yarn at color changes. Instead, twist the strands of yarn around one another on ever right side row, taking care not to twist too tightly. This pattern is both written and charted for your convenience. In this pattern, work all slipped stitches purlwise with yarn held to wrong side of work.

## PATTERN BEGINS

### SHAWL

With color A, cast on 3 sts.

**Row 1 (RS):** With color A, knit.

**Row 2 (WS):** With color A, k1, yo, k2 - 1 st inc'd, 4 sts.

**Row 3:** With color B, k2, yo, k2 - 1 st inc'd, 5 sts.

**Row 4:** With color B, k3, yo, k2 - 1 st inc'd, 6 sts.

**Row 5:** With color A, k2, yo, knit to end - 1 st inc'd, 7 sts.

**Row 6:** With color A, k5, yo, k2 - 1 st inc'd, 8 sts.

**Row 7:** With color B, k2, pm, yo, knit to last 2 sts, pm, k2 - 1 st inc'd, 9 sts.

**Row 8:** With color B, k2, sl m, k2tog, knit to m, yo, sl m, k2.

**Row 9:** With color A, k2, sl m, yo, knit to m, sl m, k2 - 1 st inc'd, 10 sts.

**Row 10:** With color A, k2, sl m, k2tog, knit to m, yo, sl m, k2.

**Rows 11-32:** Rep Rows 7-10, 5 times, then rep Rows 7-8, 1 more time - 11 sts inc'd, 21 sts.

**Rows 33-34:** With color A, rep Rows 9-10 - 1 st inc'd, 22 sts.

**Row 35:** With color B, k2, sl m, yo, sl 1, k1, \* k1, sl 1, k1, [sl 1] 2 times, k1, sl 1, k1; rep from \* to 8 sts bef m, k1, sl 1, k1, [sl 1] 2 times, k1, sl 1, k1, sl m, k2 - 1 st inc'd, 23 sts.

**Row 36:** With color B, K2, sl m, k2tog, k1, [sl 1] 2 times, k1, sl 1, k1, \* k1, sl 1, k1, [sl 1] 2 times, k1, sl 1, k1; rep from \* to 3 sts bef m, k1, sl 1, k1, yo, sl m, k2.



**Rows 37-38:** With color A, rep Rows 9-10 - 1 st inc'd, 24 sts.

**Row 39:** With color B, k2, sl m, yo, k4, sl 1, k1, \* k1, sl 1, k4, sl 1, k1; rep from \* to 6 sts bef m, k1, sl 1, k4, sl m, k2 - 1 st inc'd, 25 sts.

**Row 40:** With color B, K2, sl m, k2tog, k2, sl 1, k1, \* k1, sl 1, k4, sl 1, k1; rep from \* to 7 sts bef m, k1, sl 1, k5, yo, sl m, k2.

**Row 41:** With color A, k2, sl m, yo, [k2, sl 1] 2 times, k1, sl 1, \* sl 1, k1, sl 1, k2, sl 1, k1, sl 1; rep from \* to 5 sts bef m, sl 1, k1, sl 1, k2, sl m, k2 - 1 st inc'd, 26 sts.

**Row 42:** With color A, k2, sl m, k2tog, sl 1, k1, sl 1, \* sl 1, k1, sl 1, k2, sl 1, k1, sl 1; rep from \* to 9 sts bef m, sl 1, k1, sl 1, k2, sl 1, k3, yo, sl m, k2.

**Row 43:** With color B, k2, sl m, yo, k3, sl 1, k4, sl 1, k1, \* k1, sl 1, k4, sl 1, k1; rep from \* to 4 sts bef m, k1, sl 1, k2, sl m, k2 - 1 st inc'd, 27 sts.

**Row 44:** With color B, k2, sl m, k2tog, sl 1, k1, \* k1, sl 1, k4, sl 1, k1; rep from \* to 11 sts bef m, k1, [sl 1, k4] 2 times, yo, sl m, k2.

**Rows 45-46:** With color A, rep Rows 9-10 - 1 st inc'd, 28 sts.

Knit, Relax, Smile, Repeat!

2021 © Universal Yarn, Inc.

[www.universalyarn.com](http://www.universalyarn.com)

All rights reserved. This pattern may not be reproduced for business, trade or sale.

Questions? Contact [patterns@universalyarn.com](mailto:patterns@universalyarn.com)

**Row 47:** With color B, k2, sl m, yo, k1, [sl 1] 2 times, k1, sl 1, k1, \* k1, sl 1, k1, [sl 1] 2 times, k1, sl 1, k1; rep from \* to 2 sts bef m, k2, sl m, k2 - 1 st inc'd, 29 sts.

**Row 48:** With color B, k2, k2tog, \* k1, sl 1, k1, [sl 1] 2 times, k1, sl 1, k1; rep from \* to 7 sts bef m, k1, sl 1, k1, [sl 1] 2 times, k2, yo, sl m, k2.

**Row 49:** With color A, k2, sl m, yo, knit to m, sl m, k2 - 1 st inc'd, 30 sts.

**Row 50:** With color A, k2, sl m, k2tog, knit to m, yo, sl m, k2.

**Row 51:** With color B, k2, sl m, yo, knit to m, sl m, k2 - 1 st inc'd, 31 sts.

**Row 52:** With color B, k2, sl m, k2tog, knit to m, yo, sl m, k2.

**Rows 53-64:** Rep Rows 49-52, 3 times - 6 sts inc'd, 37 sts.

Rep Rows 33-64, 8 more times - 128 sts inc'd, 165 sts. Break color B, cont with color A only.

**Next 2 Rows:** With color A, knit. Bind off all sts kwise.

## FINISHING

Gently wash and block to finished measurements. Weave in ends.

## Abbreviations

garter st	knit every row
inc('d)	increase(d)
k	knit
k2tog	knit 2 stitches together (1 st
dec'd)	
kwise	knitwise
m	marker
pm	place marker
rep	repeat
RS	right side
sl	slip
st(s)	stitch(es)
WS	wrong side
yo	yarn over



Knit, Relax, Smile, Repeat!

2021 © Universal Yarn, Inc.

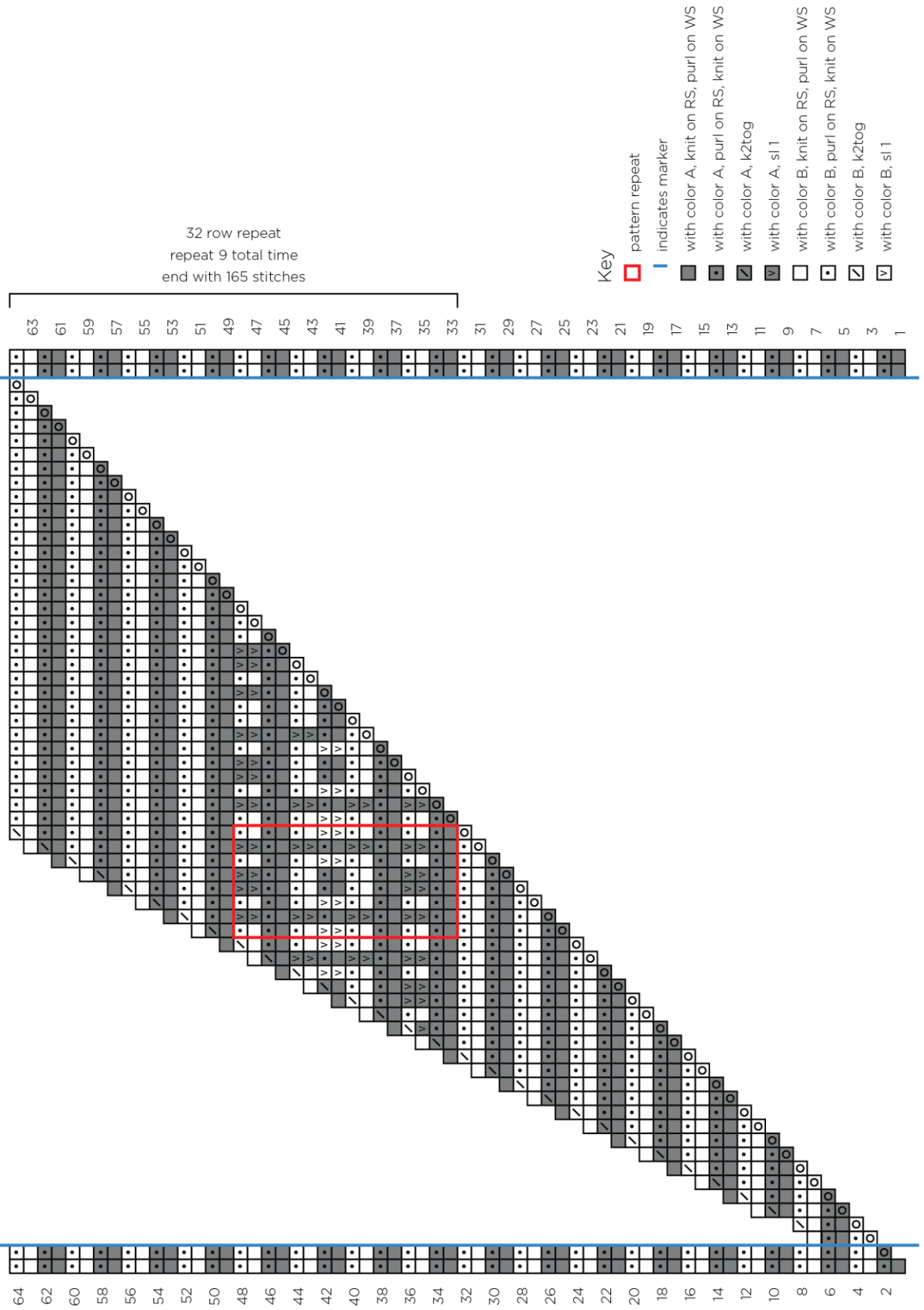
[www.universalyarn.com](http://www.universalyarn.com)

All rights reserved. This pattern may not be reproduced for business, trade or sale.

Questions? Contact [patterns@universalyarn.com](mailto:patterns@universalyarn.com)



Shawl



Knit, Relax, Smile, Repeat!

2021 © Universal Yarn, Inc.  
www.universalyarn.com

All rights reserved. This pattern may not be reproduced for business, trade or sale.  
Questions? Contact patterns@universalyarn.com